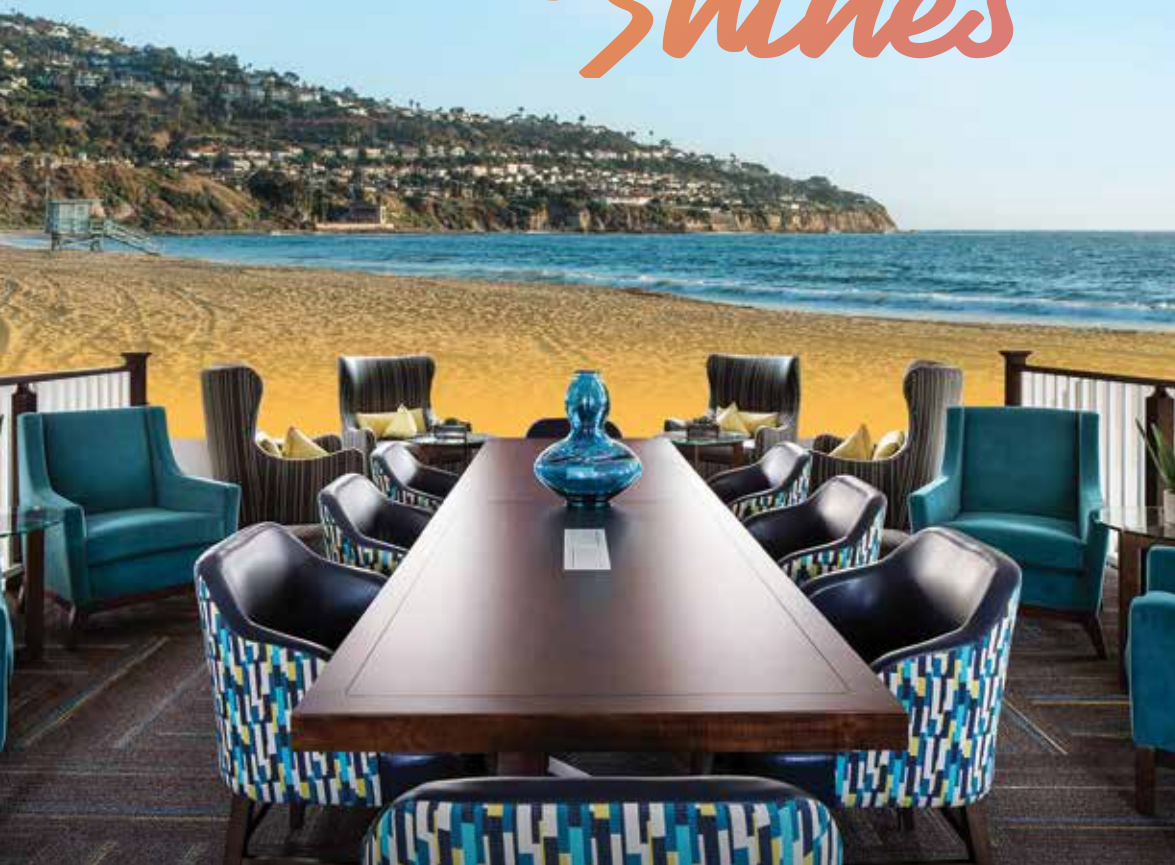


DISCOVER
TORRANCE So Cal

CONNECT WHERE

*Southern
California
Shines*



Business in Torrance is Southern California done differently.

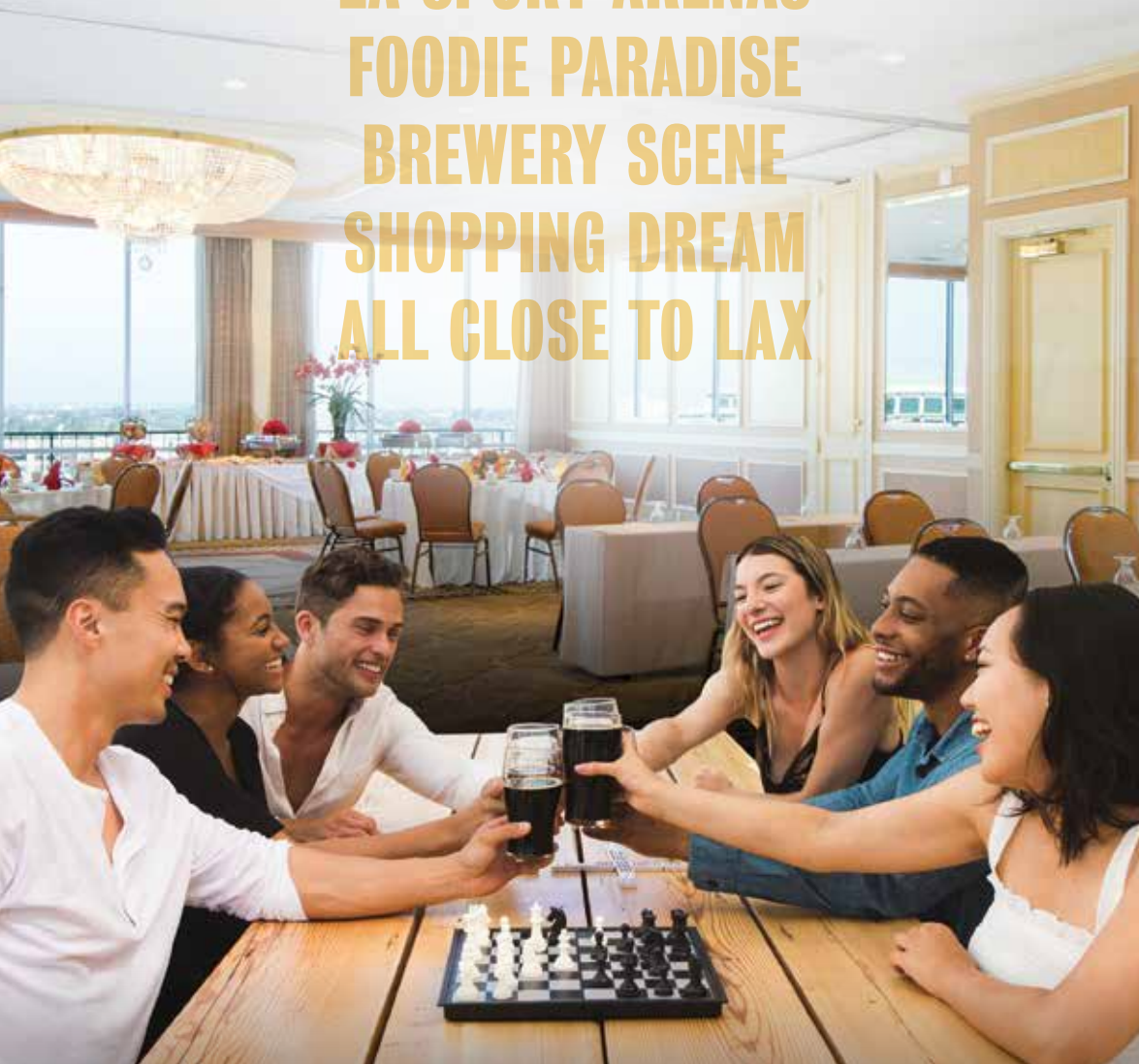
- A big city vibe without unnecessary hustle and bustle
- Just a short drive from LAX for easy arrival and departure
- Close to popular Los Angeles attractions
- 67,000+ sq. ft. of meeting space across hotels and more than a dozen unique venues
- Group-focused activities nearby plus can't-miss restaurants, shopping and craft breweries
- Friendly hotels after a day of team building and bonding
- California Welcome Center for resources and recommendations

Are you in?

For more information, visit
DiscoverTorrance.com/Meet
or call **424.558.8014**.



MEET CLOSE TO IT ALL
BEACH VIBES
UNIQUE SPACES
SPACIOUS VENUES
LA SPORT ARENAS
FOODIE PARADISE
BREWERY SCENE
SHOPPING DREAM
ALL CLOSE TO LAX



You're Invited to
Take Your Team to the
Best of Southern California

Torrance has all the benefits of a big city with none of the ego. Head here for the accommodations and meeting spaces you need and the incredible food and LA entertainment they'll love.



Hotels

From luxury hotels to budget-friendly accommodations, Torrance offers a variety of options to meet any business's taste or budget.

Best Western Plus
Avita Suites

Bluestem Hotel,
Ascend Hotel Collection

Courtyard Los Angeles
Torrance/Palos Verdes

DoubleTree by Hilton
Torrance – South Bay

Extended Stay America
Los Angeles – Torrance Blvd.

Extended Stay America
Los Angeles – Del Amo Circle

Howard Johnson Torrance

MC Pacific Inn & Suites

Miyako Hybrid Hotel Torrance

Ramada Torrance Hotel

Redac Gateway Hotel

Residence Inn Los Angeles
Torrance/Redondo Beach

Sonesta ES Suites Torrance
Redondo Beach

Sonesta Select Los Angeles
Torrance South Bay

Torrance Marriott
Redondo Beach

Year after year, Torrance's unique event spaces and hotels deliver the most inspiration for out-of-office meetings.

Unique Venues

1. Katy Geissert Library

Available rooms for any variety of groups.

2. Mary K. Giordano Regional Transit Center

15,000 sq. ft. in total, training and conference rooms.

3. South Coast Botanic Garden

87 acres, Upper Meadow = 1,000 guests; Koi Pond Patio = 100 guests; Garden Amphitheater = 150 guests; Rose Garden = 150 guests.

4. Torrance Beach

1.5 miles of pristine shoreline, can accommodate nearly any event with a permit.

5. Torrance Cultural Arts Center

Multiple indoor spaces, 60 – 502 guests.

6. Torrance Municipal Airport - Zamperini Field Meeting Room

Several meeting rooms available near community airfield.

Hotel Venues

1. Bluestem Hotel

Courtyard with fire pit for intimate gatherings of up to 40 guests. Meeting/Banquet Room = 1,710 sq. ft. space, 80 guests.

2. Courtyard Los Angeles Torrance/Palos Verdes

1,474 sq. ft. space, 50 guests.

3. DoubleTree by Hilton Torrance – South Bay

Crystal Ballroom = 5,292 sq. ft., 400 guests; Garden Court = 784 sq. ft., 75 guests.

4. Miyako Hybrid Hotel

Nara and Kyoto Room = 2,016 sq. ft., 120 guests; Asuka Room = 394 sq. ft., 20 guests.

5. Sonesta ES Suites Torrance Redondo Beach

500 sq. ft. space, 20 guests.

6. Torrance Marriott Redondo Beach

26 event rooms, 20 breakout rooms, 40,416 sq. ft. total event space with the largest capacity for 1,300 guests.

TEAM UP IN Torrance



OPEN THE DOOR To More

Torrance is an unexpected gem with unique spaces and venues. Explore meeting spaces at hotels, the beach, private gardens and more to help make your event a unique success.

Visit [DiscoverTorrance.com/meet](https://www.discovertorrance.com/meet)

Tucked away in the sunny South Bay, Torrance is located just 10 miles south of LAX and 17 miles north of Long Beach Airport. Enjoy the classic Southern California beach experience along with a good night's stay after a day of team building, bonding or meetings.

DISCOVER
TORRANCE SoCal

ACTIVITIES

1.5 MILES OF UNCROWDED COASTLINE

When business wraps up, Torrance Beach is a local gem with volleyball, surfing and cruising. Treat your VIP team to classic West Coast surf and sand.

FUN FACT: The Strand, a popular bike and walking path, starts at Torrance Beach and covers 22 miles to Pacific Palisades.

400+ DIVERSE AND DELICIOUS EATERIES

Torrance offers incredible cuisine and experiences for every taste. Plus, with 10 breweries, Torrance is the hub of the Southern California craft beer scene, complete with customized beer tours and our own brewery map.

FUN FACT: Torrance has been dubbed “The Ramen Capital of Southern California.”

OPEN SPACES AND NATURE PRESERVES

When you want to break from business and explore the outdoors, Torrance is home to 33 parks, a year-round Certified Farmers' Market, miles of paved oceanside pathways for walking, biking or jogging, and the Madrona Marsh Preserve and Nature Center — home to a rare wetland habitat with native plants, wildlife, birdwatching and a nature center.

FUN FACT: The Madrona Marsh Preserve is thought to be the last remaining freshwater marsh in Los Angeles County.

UNIQUE CULTURAL EXPERIENCES

If your company is into culture, Torrance has an impressive collection of fine art from international, national and locally renowned artists. From the Torrance Art Museum to VEFA Gallery, there are plenty of cultural excursions to experience.

FUN FACT: The Chen Art Gallery has one of the largest collections of ancient Chinese art in the U.S.

NEXT-LEVEL SHOPPING IS HERE

If your team has time on their hands or forgot the basics, retail therapy is close at hand with more than 250 stores and options for every style and budget.

FUN FACT: The Del Amo Fashion Center is one of the largest malls in America and includes 2.7 million sq. ft. of indoor and outdoor shopping.

SPORTS HUB OF SOUTHERN CALIFORNIA

Sports are a great way to bring your team together, and Torrance is in the center of every major league team in the area.

FUN FACT: The whole crew can take Torrance Transit to a Rams or Chargers home game at SoFi Stadium for only \$2 each way, per person.

Get the Facts

- **TOTAL POPULATION:** 148,495
- **SIZE:** Eighth largest city in Los Angeles County at 21 square miles
- **LODGING:** 2,500 hotel rooms, 15 properties
- **MEETING SPACE:** 67,000+ sq. ft.
- **WEATHER:** Averages 72° year-round
- **LOCATION:** Approximately 10 miles from LAX and 30 miles from Hollywood, Universal Studios and Disneyland®
- **WELCOME CENTER:** Torrance has a California Welcome Center located in the Del Amo Fashion Center, Main Level, Entrance 1

For more information, visit DiscoverTorrance.com/Meet or call 424.558.8014.

